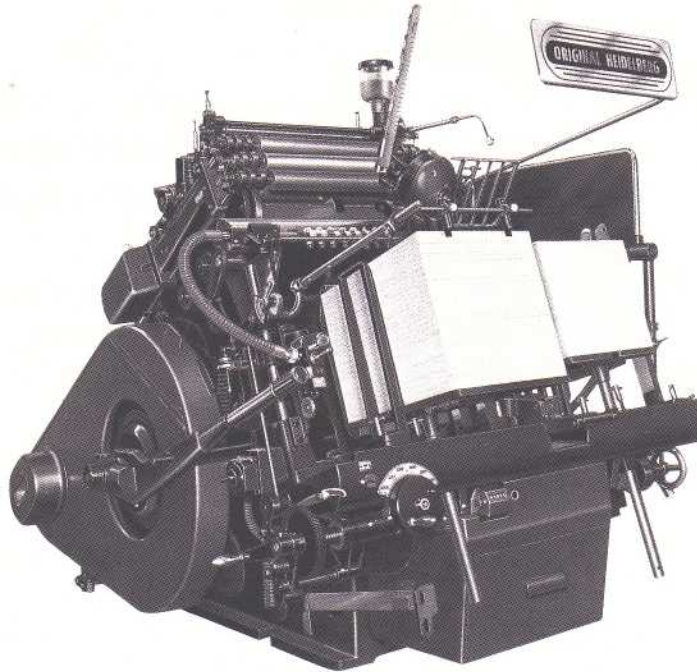


**13³/₈ x 18¹/₈" (34 x 46 cm)
Heidelberg Automatic Platens**

GT/GTK



Specifications

Maximum sheet size

**GT/GTK 13³/₈ x 18¹/₈"
34 x 46 cm**

13³/₈ x 18¹/₈"
340 x 460 mm

Minimum sheet size

3³/₈ x 4³/₄"
85 x 120 mm

Two-up:

Maximum sheet width

6⁵/₈" = 168 mm

Smallest sheet width

3³/₈" = 85 mm

Gripper margin

15/₆₄ to 9/₃₂"
6 to 7 mm

Maximum speed

4,000 sph.

Minimum speed

1,600 sph.

Forme size

Standard chase

12⁵/₈ x 17³/₄"
320 x 450 mm

Packing thickness

.04" = 1 mm

Inking system

Forme rollers

3

Diameter of forme rollers

2" = 51 mm

Pile heights

(from table to top of pile)

Feeder

11³/₄" = 300 mm

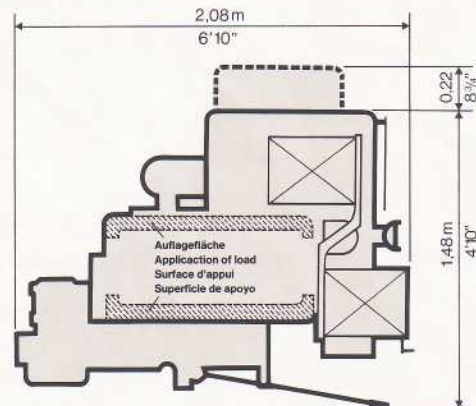
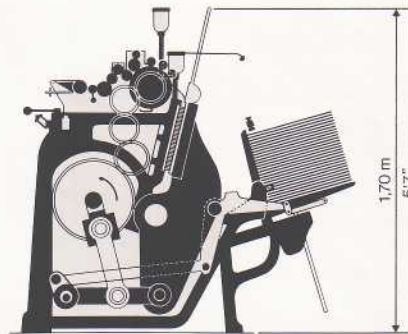
Delivery

13" = 330 mm

In the case of model GTK (combination platen for printing, cutting and creasing) the area of the impression platen is ground off by 1/₈" (3 mm) from normal.

A 1/₈" (3 mm) super refined steel plate is screwed down for die-cutting.

A 5/₆₄" (2 mm) super refined steel plate is screwed down for printing on the GTK. The protective and make-ready plate underneath the chase remains in the press.



Heidelberger Druckmaschinen Aktiengesellschaft

ORIGINAL HEIDELBERG

These inexpensive multi-purpose A3 platens are indeed uncomplicated. Their operation is safe and easy, presenting no problems whatsoever. Ideal machines for printers who handle, in addition to paper, heavy carton stock and also want to do die-cutting, embossing, creasing, perforating, cutting and numbering.

Technical details

Rugged, massive base and heavy impression platen of refined cast steel. Platen shaft of steel. Platen surface and bed highly polished. Time-tested toggle lever system with adjustable impression strength, hence accurate, safe printing with smooth, uniform impression. Sheets are fed and delivered by pair of rotating grippers. Suction bar adjustable to different thicknesses of paper and carton stock. Light-stock control button for thin and flimsy paper. Misfeeding control. Aerodynamically controlled sheet delivery, perfect register, also at

varying speeds, thanks to accurately operating lay gauges. Cylinder inking system. Three forme rollers run in firmly pressed-on precision ball bearings. Two rider rollers serve as ink reservoirs (extra accessory). Ink knife with 15 adjustment screws. Drop-back ink fountain. When impression is off, ink supply is interrupted at once. Powder spray coupled with impression lever. Roller wash-up device as standard equipment. Single-lever central lubrication. Overload safety device. Many optional accessories.

Applications

In addition to all kinds of jobbing work, the platens do packaging jobs, in small and medium runs. GT model for carton stock up to .040" (1 mm). GTK for stock up to .080" (2 mm). Special GTK accessory handles heavier board, Balsa wood, and similar materials up to .160" (4 mm) thickness. Both models are eminently suitable for embossing, die-cutting, creasing, cutting, perforating, and numbering with plunger-operated

and centrally controlled numbering units. They also lend themselves to imprinting on printed labels, carton blanks, letter envelopes, tags, calendar mounts. Processing of printed folders, in folded condition, and of stitched brochures, of bulky materials, one-sided or two-sided, of cut out blanks of oval or irregular shape. Two-up feed and (for smaller runs) three- and four-up feed.

Dimensions and weights

Length x Width x Height	6'10" x 5'7" x 5'7" = 2.08 x 1.70 x 1.70 m
Total floor load (incl. piles)	5260 lbs. = 2385 kg
Floor space for press alone	6'10" x 5'7" = 38 sq.ft. = 2.08 x 1.70 m = 3.54 m ²
Foundation for press	3'6 ¹ / ₂ " x 1'9" = 6.2 sq.ft. = 1.08 x 0.54 m = 0.6 m ²
Normal working space	11'6" x 8'10" = 102 sq.ft. = 3.50 x 2.70 m = 9.5 m ²
Minimum working space	9'10" x 8'2" = 80 sq.ft. = 3.00 x 2.50 m = 7.5 m ²
Min. opening for assembled machine	Height 5'5" = 1.65 m, Width 4'11" = 1.50 m
Min. opening for dismantled machine	Height 5'5" = 1.65 m, Width 2'11" = 0.90 m

Power data

	GT/GTK
	50/60 Hz
Rated power, motor	1.5 kW = 2 hp

Dimensions of case · Net and gross weights

Model	Content of case	Length x Width x Height = cu.ft./m ³	net	gross
GT/GTK	compl. machine	5'8 ¹ / ₂ " x 4'10" x 5'6" = 152 cu.ft. 1.74 m x 1.48 m x 1.68 m = 4.3 m ³	4960 lbs. 2250 kg	5510 lbs. 2500 kg